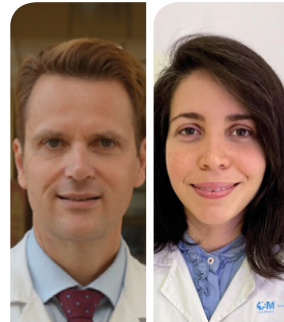


EPILEPSY SURGERY IN TUBEROUS SCLEROSIS



DIAGNOSIS

- ☐ Cerebral tumor
- ☐ Traumatic subdural/epidural hematoma/ intracranial hemorrhage
- ☐ Aneurysms/arteriovenous malformation (AVM)
- ☐ Fracture
- ☒ Epilepsy surgery in tuberous sclerosis



AUTHOR

Dr. Marcelo Budke
Dra. Hyaissa Ippolito Bastidas
Niño Jesus Hospital
Madrid, Spain



TECHNICAL DETAILS

PATIENT

Age

- ☐ Adult years
- ☒ Children years

Remarks

- ☒ 1st operation
- ☐ Re-operated
- ☐ 2nd
- ☐ 3rd
- ☐ 4th
- ☐ Others

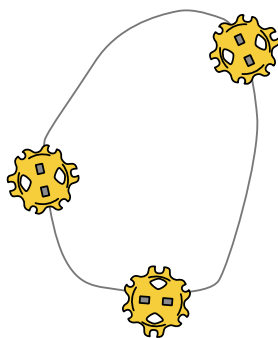
CRANIOTOMY

Craniotomy location

- ☐ Bifrontal
- ☐ Frontal
- ☐ Frontoparietal
- ☐ Frontoparietaltemporal
- ☒ Frontotemporal
- ☐ Occipital
- ☐ Orbitozygomatic
- ☐ Parietal
- ☐ Pterional
- ☐ Retromastoid
- ☐ Suboccipital
- ☐ Supraorbital
- ☐ Temporal

Side

- ☒ Left
- ☐ Right



Approx. craniotomy size

Length x width: x cm

Burr Holes

- ☒ Yes ☐ No
- ☒ Perforator (Size: ☒ 11mm ☐ 13mm ☐ 14mm)
- ☐ High speed ball drill (Size: mm)

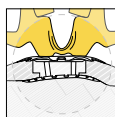
CRANIOTOMY CLOSURE

Craniotomy closure devices in this case:

- ☒ Cranial LOOP™. How many?
- ☐ Cranial LOOP L™. How many?
- ☐ Cranial LOOP XL™. How many?

Other materials used:

- ☐ Dura sealant
- ☐ Dural tag
- ☐ Others (Please specify)

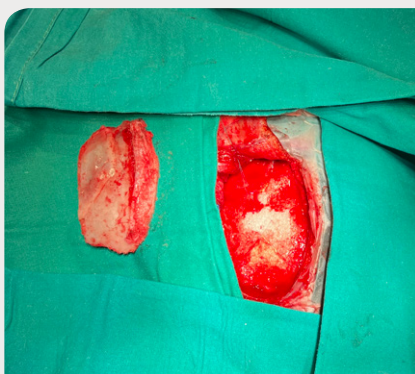




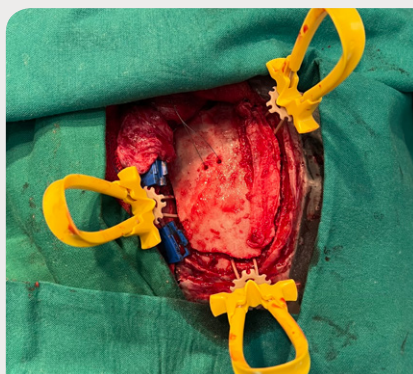
1 Preoperative cranial CT



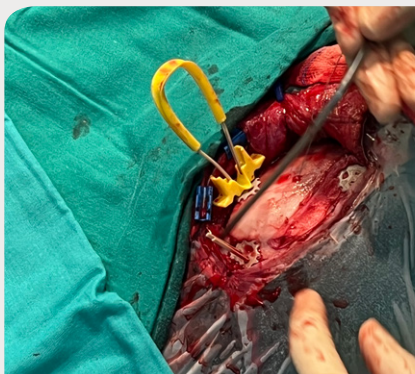
2 OR environment



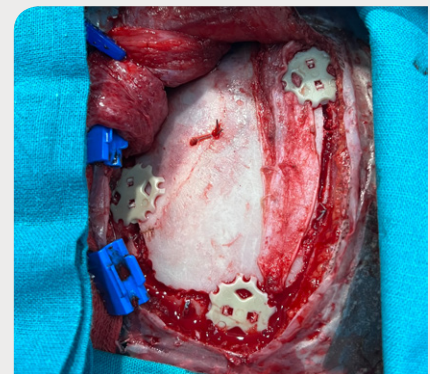
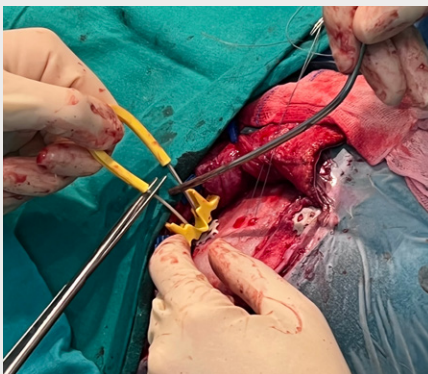
3 Craniotomy before fixation showing bone flap



4 Insertion of the cranial loops at the bone edges, between the dura and the bone.

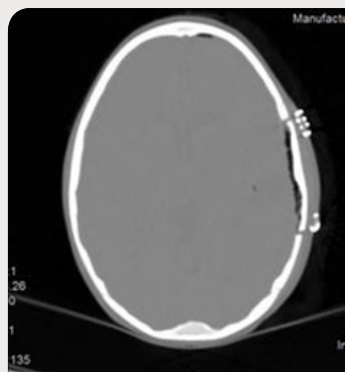


5 Breaking of the Cranial LOOP cable ties

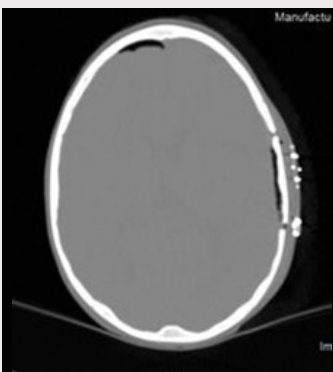


6 Bone flap fixed with Cranial LOOP

7 Post operative CT Scan



CT shows good anatomical position of the bone flap.



Axial CT image shows the bone flap.

